



Zeta Dental Lab

exocad 3shape 

**Crowns Bridges Dentures Implants
Dental CAD/CAM Design & Output**





Anatomy & Aesthetics

自然與美學



ZETA DENTAL LAB



Zeta Dental Lab

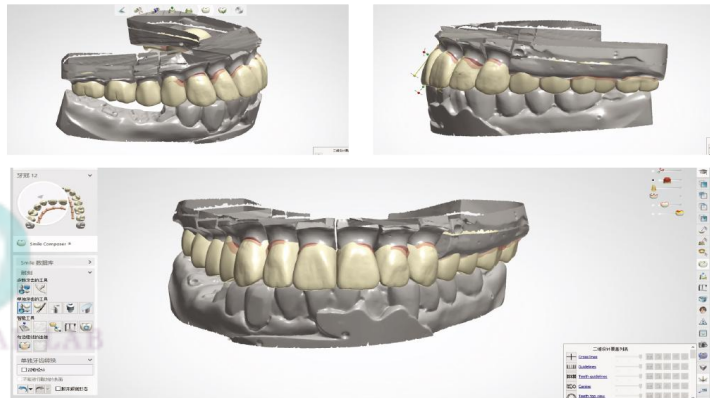
Zeta Dental Lab is a joint venture set up by KSM Dental Lab in Shenzhen and Mega Dental Product Co. in HK. The latter has been providing dental products and services for more than two decades. Nowadays we not only provide high-end and top quality dental prosthesis, but also dental design services. Our approach is a total solution for dentists.

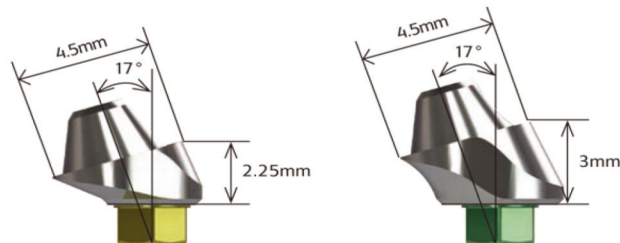




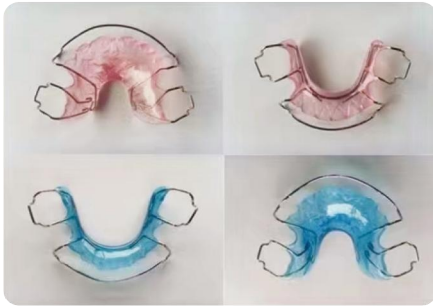
Zeta is capable of making most removable and fixed dental restoration based on .STL files. We can design the framework for denture, implant abutments and crowns, monopoly crowns and bridge, Valplast denture, Emax CAD and telescopic crowns. We send the design to the client for confirmation. By doing so, make sure that both parties understand the outcome of the final products ahead of production. No surprises anymore.

Zeta has a team of qualified and highly experienced dental professionals who have been making functional and quality dental restorations year after year. At the same time, our CAD engineers take advantage of the latest technology and cloud services to provide our clients with convenience and efficiency. All materials are CE and FDA certified.



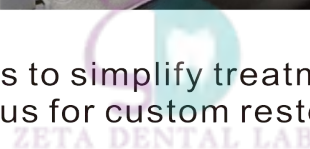


Our high accuracy, 5 axes milling equipment enables us to fit the crowns and implant abutments perfectly, no matter you are using genuine or third party components.



Our in-house capability in CAD and 3D printing allows us to provide orthodontic devices like clear aligners, Hawley Retainers, Frankel Retainers, etc, in a much more convenient way than ever.

We are aiming at helping dentists to simplify treatment, optimise results and reliable prognosis. You can partner with us for custom restorative services, clinical solutions and digital applications.





Right now Zeta has a broad customer base in HK and the EU. Our service commitments to you include and not limited to

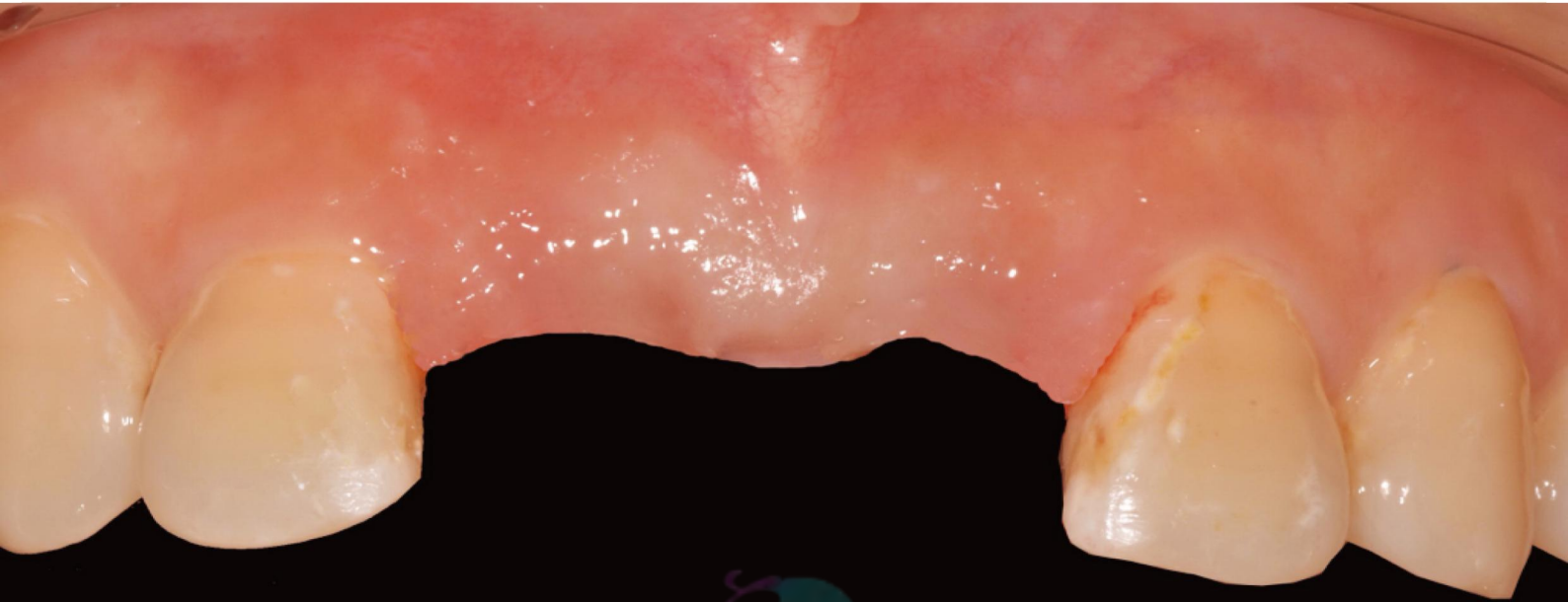
- (1) 24 hours response time on your notice to pick up impressions from your clinic
- (2) Delivery of finished product to your clinic within 7 days from the pick up
- (3) In case of rework, less than 3 days turn-around time.

Please feel free to contact us using zetadental@outlook.com on the 3shape Communicate platform





Before: Maxillary incisors missing



ZETA DENTAL LAB

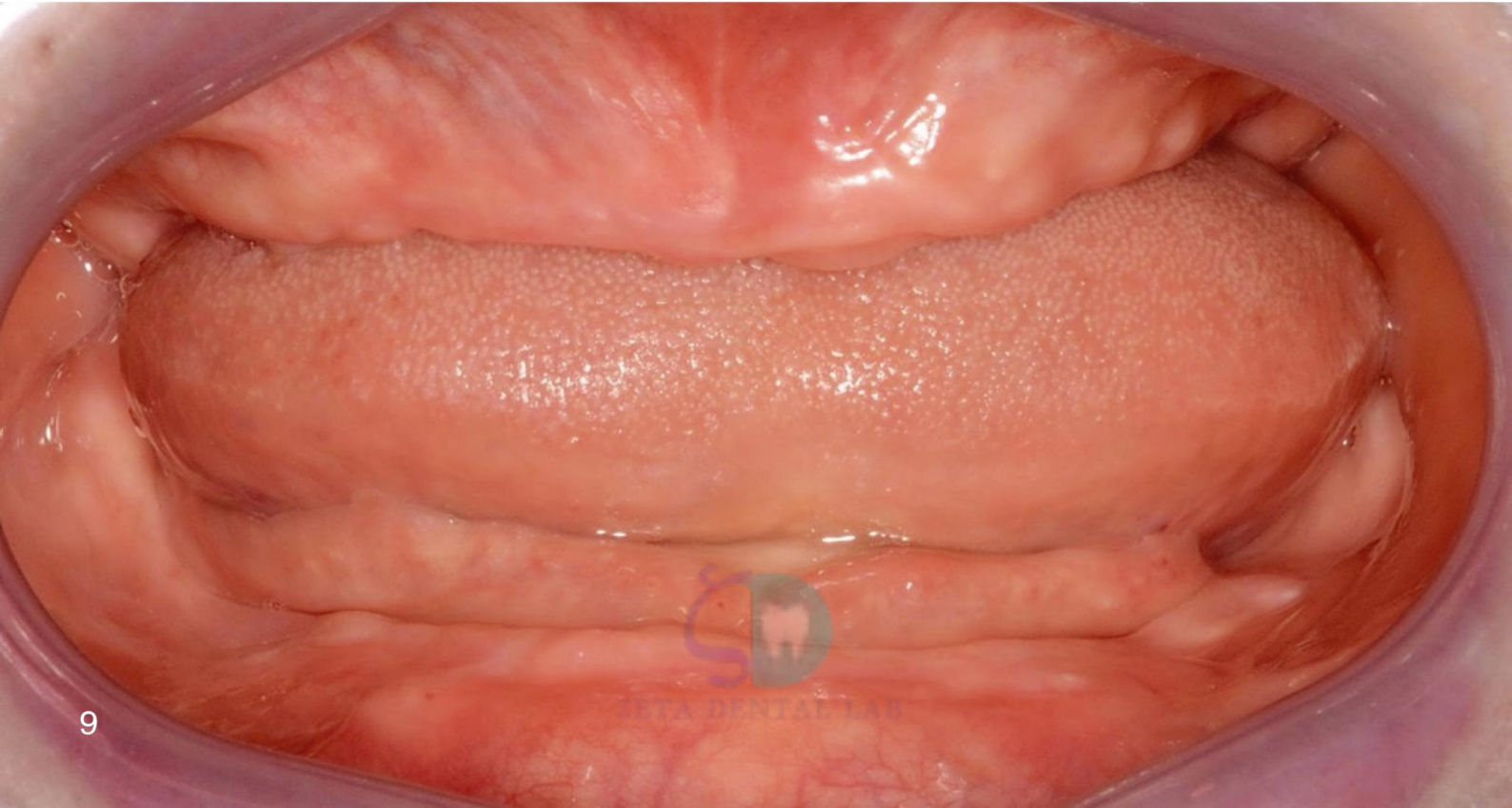


After: Zirconia abutment and crown in one piece installed





Before: Maxillary and mandible edentulous



ZETA DENTAL LAB



After: Hybrid bridge installed





Before: Mandible partially edentulous



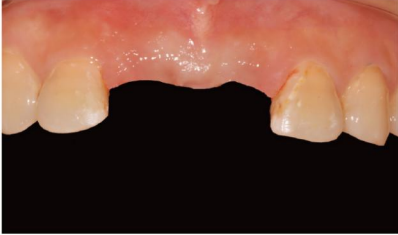


Zirconia implant bridge installed





Zirconia and Abutment in One Piece



Before surgery



Step 1 Place implant



Step 2 NobeProcera design



Step 3 Zirconia abutment crown



Step 4 Porcelain build up



Step 5 Cementing

The patient is a lady with two maxillary incisors missing. Two branemark fixtures were implanted. Permanent restoration was completed after 4 months' treatment.

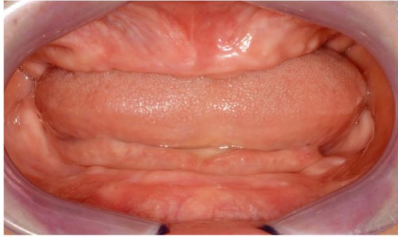
NobelProcera zirconia abutment and crown in one piece is aesthetic, has no cement residue and easy to install in mouth.

The screw-retained implant crown is hygienic, has no cement residue and easy to clean.

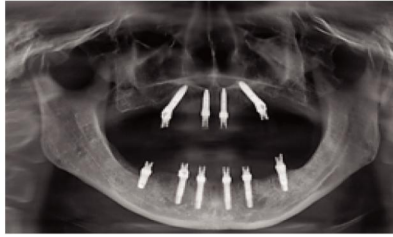
Anterior teeth call for high aestheticism. The flexibility in designing the gingival height of the NobelProcera custom abutment guarantees the most satisfactory result.

ZETA DENTAL LAB

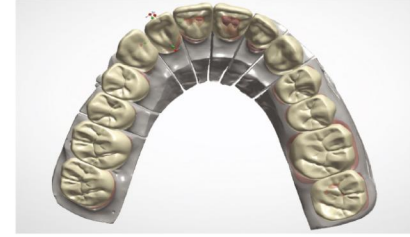
Hybrid Bridge



Before surgery



Step 1 Place implant



Step 2 Computer aided design



Step 3 Ti Frame milling



Step 4 Acrylic finishing



Step 5 Seating in mouth

Patient is maxillary and mandible edentulous. Permanent restoration was established 4 months after implant placement.

Milled Ti implant hybrid bridge is strong, precise and long lasting. It can be seated easily and passively due to its high accuracy.

It is light in weight, with high tensile strength and proper flexibility which protect implant fixtures well enough.

We design the emergence profile(trans-gingiva) anatomically to get "chamfer effect".



Zirconia Implant Bridge



Before Surgery



Step 1 Place implant



Step 2 NobelProcera design



Step 3 Zirconia coping



Step 4 Porcelain build up



Step 5 Seating in mouth

Mandible posterior teeth missing. Restored 4 months after fixture implanted.





Zirconia



The pursuit of aestheticism is reflected in harmonious combination of ratio, shade and craftsmanship.





Zirconia

Material:

1. Good translucency, bio-compatibility and tensile strength.
2. Similar to natural teeth in shade which makes it popular among patients and doctors.
3. Low thermal conductivity, which can protect marrow better. Lighter, comfortable in mouth.
4. No need to remove during X ray, CT and MRI scanning.

Aesthetic Design:

- Esthmax Series, milled by CAD/CAM, with or without veneering porcelain build-up, customized design by analyzing patients face, lip, age, character and natural teeth ratio.

Functional Design:

- Esthmax Series considers TMJ, bite relationship duly to make the crowns work as genuine as possible.





Improving Shade and Shape



ZETA DENTAL LAB



Fibonacci CC Aesthetic Veneer



ZETA DENTAL LAB



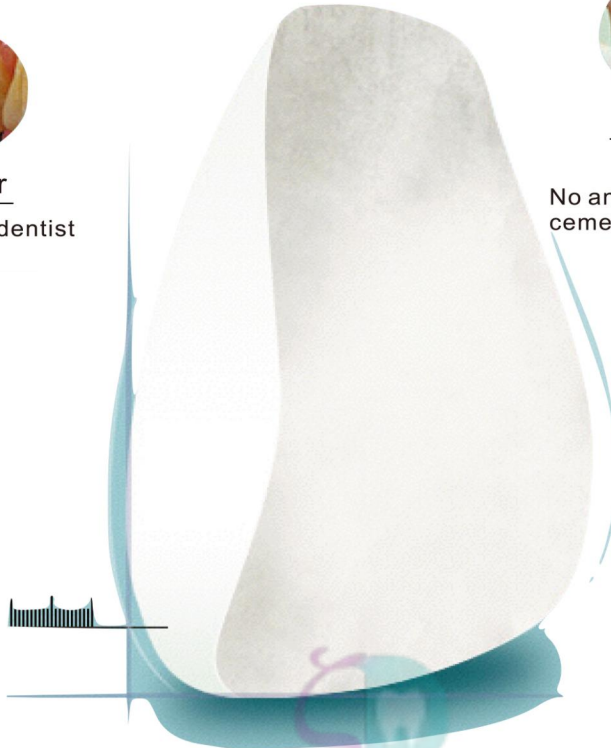
Whitening forever

One veneer, twice visits to dentist



Unique smile 0.2 mm

Minimal invasion
400 flexural strength



Pain free, less sacrifice of
healthy teeth

No anesthesia, quicker and less uncomfortable
cement



Personalized
Unique Smile



Aesthetic analysis
Golden ratio

ZETA DENTAL LAB



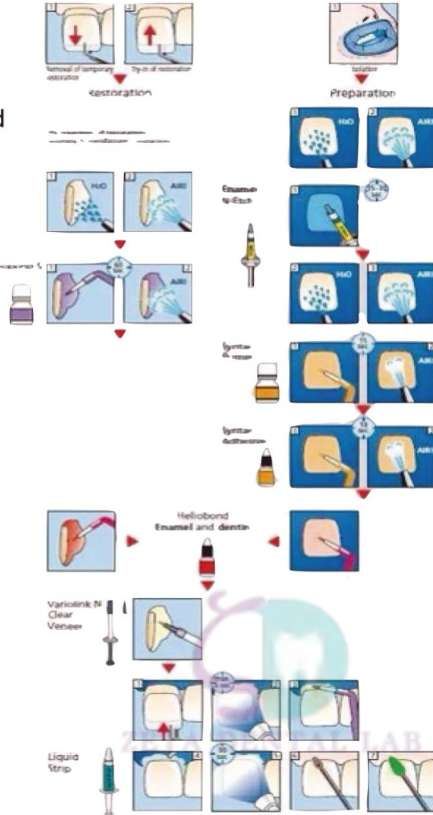
Bonding Step

CC 美學貼面黏接技巧

Acid etching with hydrofluoric acid
20 seconds, then dry it



Acid etching with silane coupling
agent 60 seconds, they dry it



Preparation



Acid etching with phosphate
Coagulate grease about 15-30
seconds, then wash it



Gently rinse dentine surface 15 seconds



Leave cement on dentine 10 seconds



Put thin layer of enamel cement



Light curing cement



Check if it fits with light



Remove excessive variolink



Finish



Major Implant Brand Catalog						
Brand	Country	Model	Customer Abutment			Screw Torque
			Titanium	Zirconia	Hybrid (Ti base +Zirconia)	
3I	USA	Certain3.4/4.1/5.0/6.0	●	/	●	20
Zimmer		Tapered Screw-vent 3,5 4.5/5.7	●	/	●	30
BioHorizons		Internal3.0/3.5/4.5/5.7	●	/	●	30
Astra	Sweden	OsseoSpeed 3.5/4.0 \ OsseoSpeed 4.5/5	●	/	●	25
Straumann (ITI)	Swaziland	NN/RN/WN	●	/	●	35
Straumann Bone Level		NC (Φ 3.3) \ RC (Φ 4.1/Φ 4.8)	●	/	●	35
SIC		0.785714285714286	●	/	●	20
Friadent	German	Frialit 3.0/3.4/3.8/4.5/5.5/6.5	●	/	●	24
Xive		Regular C	●	/	●	15
Ankylos		Φ 3.3/3.8/4.3/5.0	●	/	●	20
Camlog		Splie1.75/3.25/4.1/4.5	●	/	●	30
Bego						
Osstem	South Korea	GS Mini(Φ 3.5)/GS Standard(Φ 4.0/Φ 4.5/Φ 4.8)	●	/	●	30
Dentium		DAN38	●	/	●	30
Dio(SM Internal)		SM Internal Na 3.8/SM Internal Re-WI(4.5 5	●	/	●	20
Anthogyr	France	Axiom	●	/	●	25
MIS	israel	Internal Hex Narrow (Φ 3.3)	●	/	●	35
		Internal Hex Standard (Φ 3.75, Φ 4.20)	●	/	●	35
		Internal Hex Wide (Φ 5.0, Φ 6.0)	●	/	●	35

● Available
 / Under research
 Genuine screw, fastened with genuine torque wrench





Zeta Dental Lab

☎ +852 9447 5559 +852 6753 3391

📍 Room H, 11/F, Century Centre, 33-35, Au Pui Wan Street,
Fo Tan, NT, Hong Kong.

✉ zetadental@outlook.com (3shape communication platform)

🌐 www.zetadentallab.com